

## Product Information

# Flow Indicator PO



- Simple flow display
- Rotatable connections
- Removable connections thanks to clip-fitting
- Different connection possible on each side

## Characteristics

Mechanical flow indicator, for fluid media, with rotor for quantitative flow display. The rotor turns in proportion to the flow.

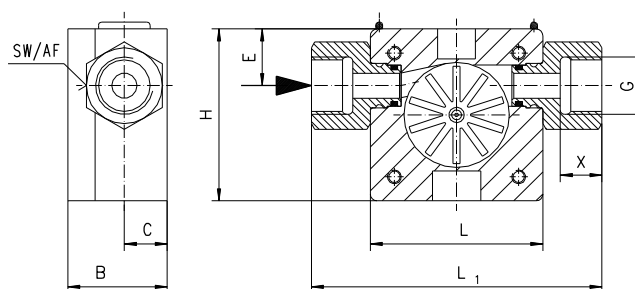
## Technical data

Nominal width	DN 10, DN 25	
Process connection	female thread G <sup>3</sup> / <sub>8</sub> , G 1	
Display range	0.1..100 l/min	for details see table "Ranges and weights"
Q <sub>max.</sub>	to 100 l/min	
Pressure resistance	PN 16 bar	
Medium temperature	0..60 °C	
Ambient temperature	0..60 °C	
Materials medium-contact	PPS, PSU Ultrason, PVDF, ceramic ZrO <sub>2</sub> -TZP, Iglidur X, FKM	
Medium	water (oils have a tendency to a higher running-up value)	
Weight	see table "Ranges and weights"	
Installation location	as desired, except for inwards flow from above	

## Ranges and weights

G	Types	PN bar	Range l/min H <sub>2</sub> O	Weight kg
G $\frac{3}{8}$	PO-010GVA020	16	0.1 - 1.5	0.1
	PO-010GVA050		0.2 - 10.0	
	PO-010GVA070		0.4 - 12.0	
G 1	PO-025GVA080	16	2.0 - 30.0	0.4
	PO-025GVA120		3.0 - 60.0	
	PO-025GVA160		4.0 - 100.0	

## Dimensions



G	H	L	L1	B	C	E	SW	X
G $\frac{3}{8}$	50	50	84	29	12.5	16.5	22	12
G 1	70	70	110	53	23.0	27.5	38	18

## Handling and operation

### Installation

Installation location as desired (please ensure best possible venting).  
Because of the rotatable connections, no further adapter is required.

## Ordering code

PO- 

1.	2.	3.	4.	5.	6.
<input type="text"/>	<input type="text"/>	<input type="text"/>	<input type="text"/>	<input type="text"/>	<input type="text"/>

○=Option

<b>1. Nominal width</b>		
010	DN 10 – G $\frac{3}{8}$	
025	DN 25 – G 1	
<b>2. Mechanical connection</b>		
G	female thread	
<b>3. Connection material</b>		
V	PVDF	
M	○ CW614N	
K	○ stainless steel	
<b>4. Housing material</b>		
A	PPS with transparent polysulfone cover	
<b>5. Inwards flow drilling</b>		
020	Ø 2	●
050	Ø 5	●
070	Ø 7	●
080	Ø 8	●
120	Ø 12	●
160	Ø 16	●
<b>6. Seal material</b>		
V	FKM	
E	○ EPDM	
N	○ NBR	